

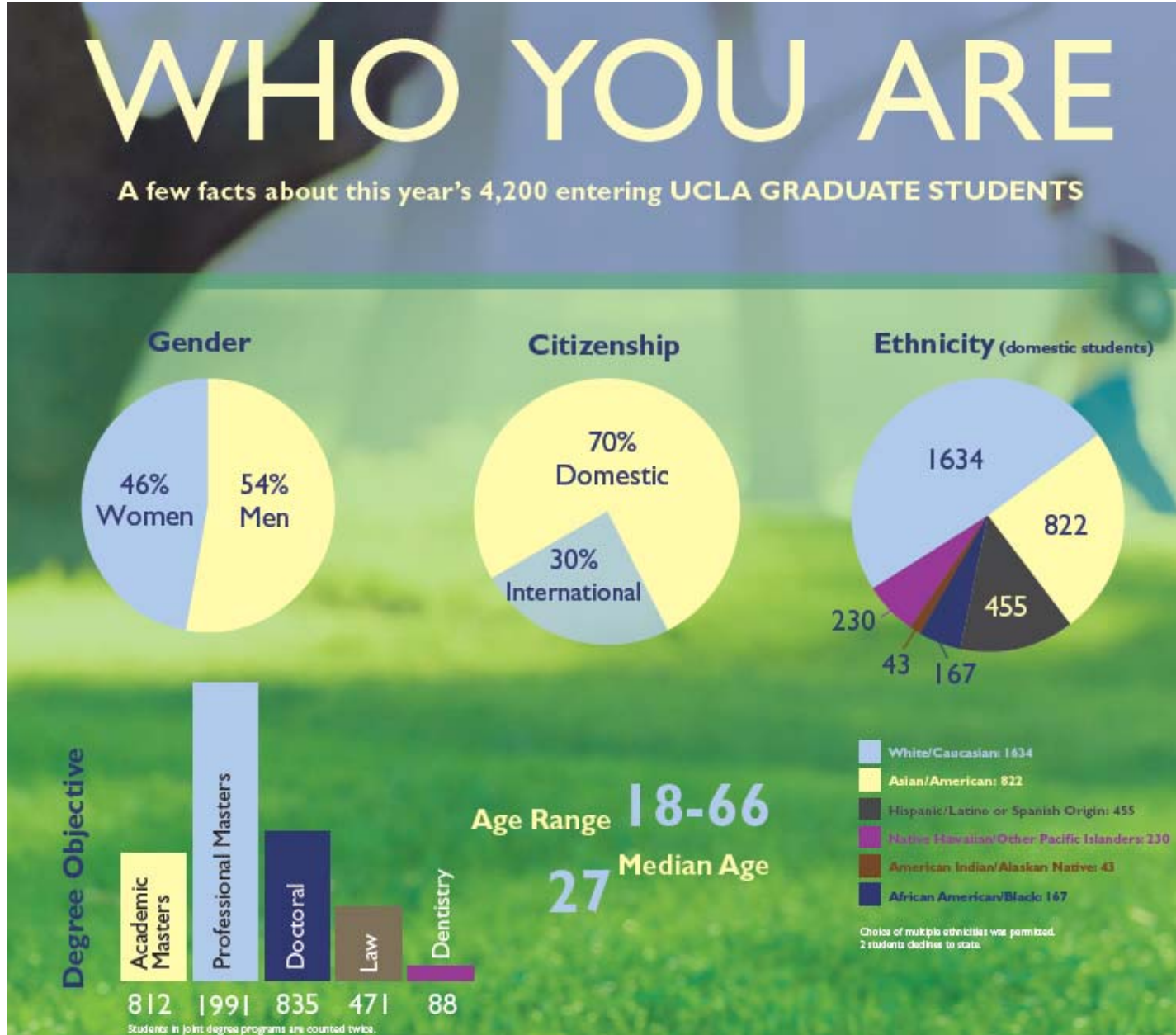
**Graduate Division Fall 2014
Department Chairs' Meeting
Pre-Meeting Materials**

Fall 2014 Department Chairs' Meeting Pre-Meeting Materials

	<u>Page</u>
Who You Are: (Profile of incoming 2014-15 graduate students)	3
Enrollment in State-Supported Programs	4
Enrollment in Self-Supporting Programs	5
Applicants, Admits, New and Total Enrollment Trends (2002-2014) for graduate programs (excluding Law, Medicine, Dentistry, and Special Fee)	6 - 9
Table A: All Table B: Master's Table C: Doctoral Table D: International	
Historical Enrollment of State-Supported Programs International Students	10
Home Countries of Entering International Graduate Students	11
Home States of Entering Domestic Graduate Students	12
State-Supported Underrepresented Programs Minorities Applications, Admits and Intentions	13
Postdoctoral Scholars & Visiting Graduate Researchers by Field	14
International Graduate Admissions	15
International Graduate First Time Enrollment	16
International Graduate Total Enrollment	17

If you have questions about these data or would like more information, please contact Albert Biscarra at abiscarra@grad.ucla.edu or Nida Rinthapol at nrinthapol@grad.ucla.edu

Profile of Incoming 2014-15 Graduate Students¹



¹Excludes students with MD degree objective

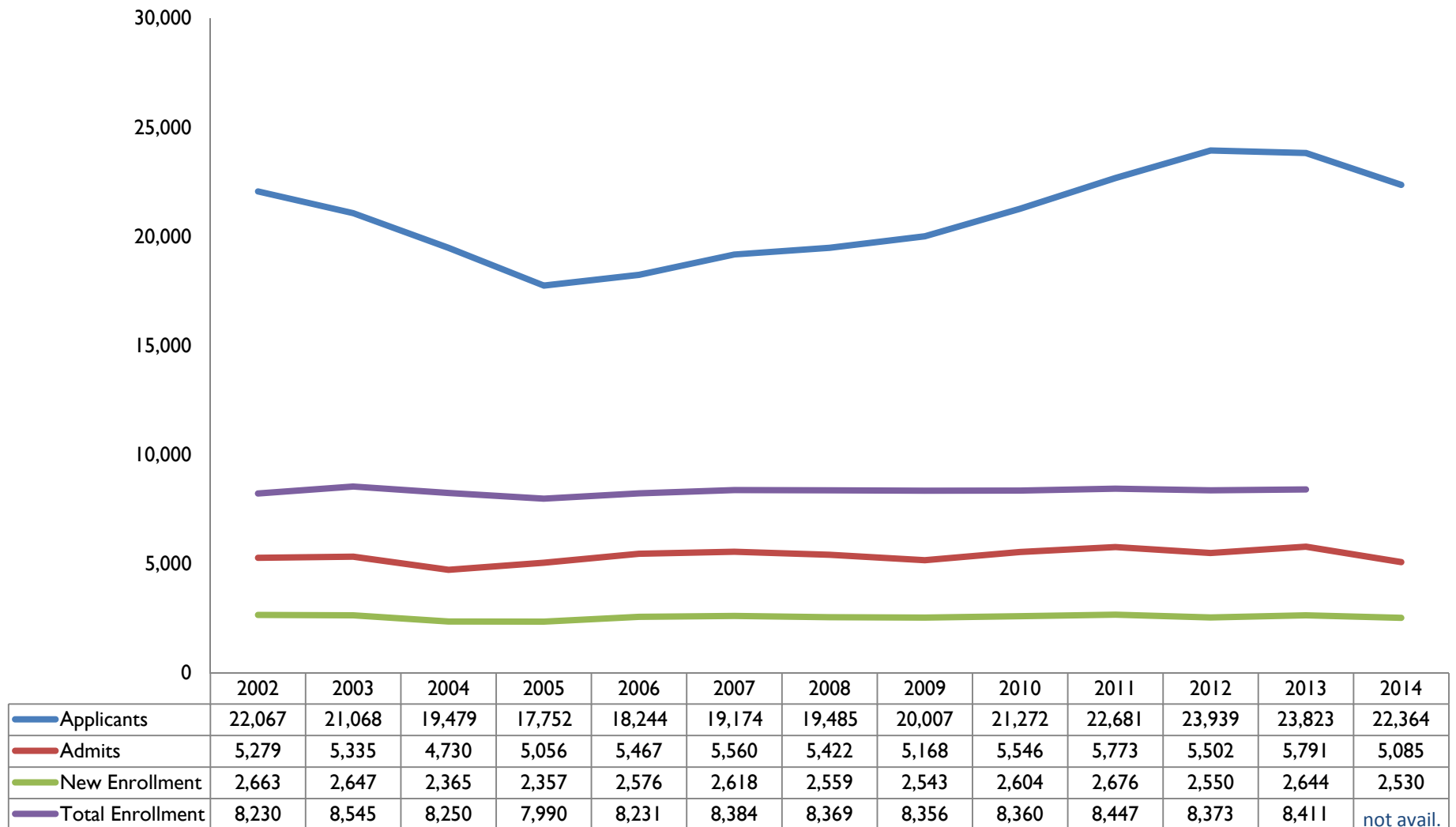
Enrollment in State-Supported Programs

FALL TERM 2013	Men	Women	Total
Total Enrollment	5,433	5,096	10,529
Degrees awarded through Graduate Division	4,322	4,089	8,411
MD, DDS, JD, & LLM	1,111	1,007	2,118
<hr/>			
Domestic	4,059	4,261	8,320
African American	181	294	475
American Indian	24	35	59
Asian	842	883	1,725
Chicano/Mexican American	260	370	630
East Indian/Pakistani	140	129	269
Latino/Other Hispanic	178	226	404
Filipino	76	91	167
Non-Hispanic White	2,075	1,964	4,039
Other Ethnicities	104	134	238
Pacific Islander	16	13	29
Unknown/Decline to State	163	122	285
International Students	1,374	835	2,209
California Residents (domestic)	3,568	3,850	7,418
Non-California Residents (domestic)	491	411	902
Applications	21,313	18,493	39,806
Admissions	4,249	3,903	8,152
Entering Students	1,742	1,615	3,357

Enrollment in Self-Supporting Programs

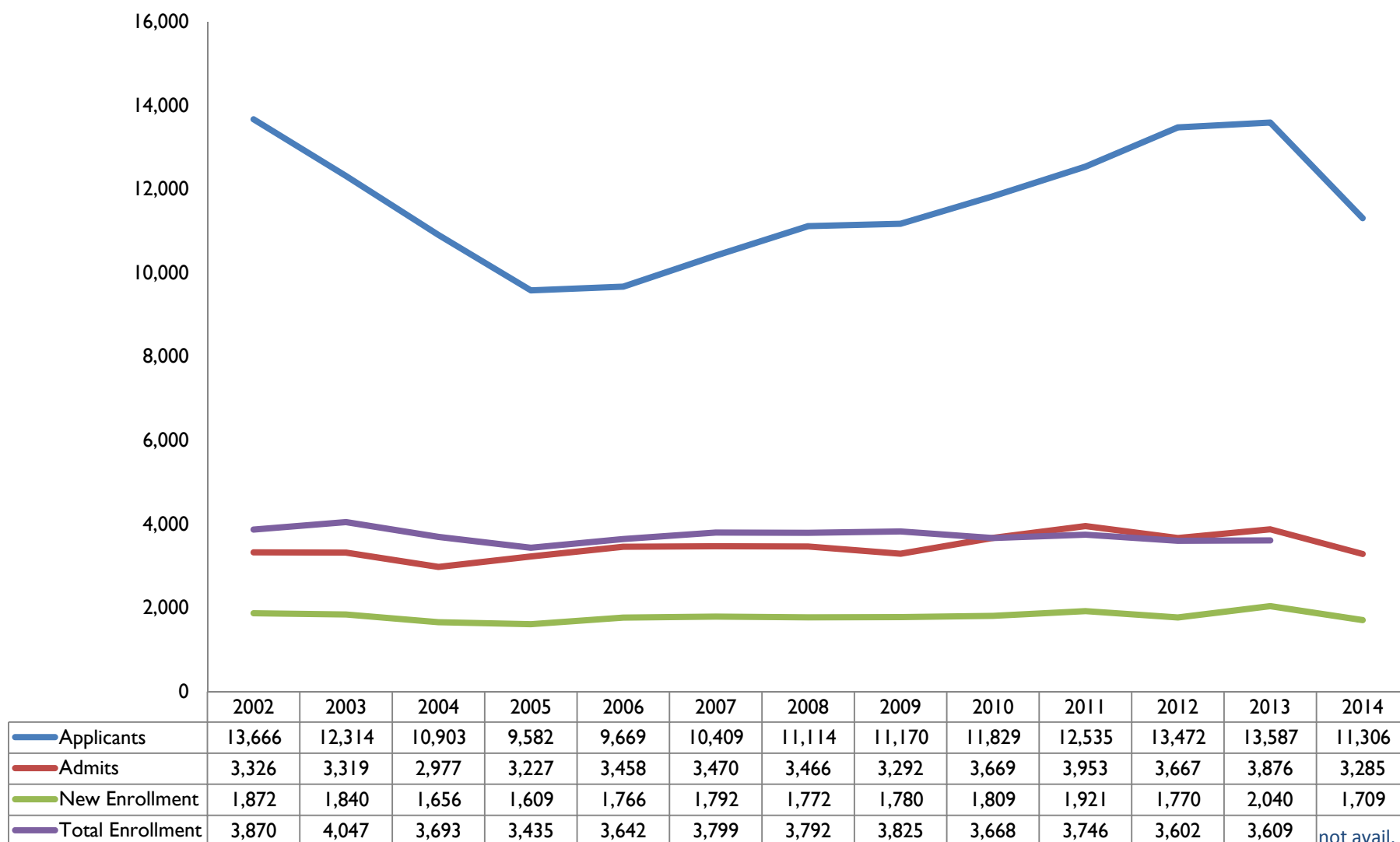
FALL TERM 2013	Men	Women	Total
Total Enrollment	1,091	501	1,592
			0
Domestic	872	435	1,307
African American	28	27	55
American Indian	6	3	9
Asian	197	110	307
Chicano/Mexican American	39	25	64
East Indian/Pakistani	102	27	129
Latino/Other Hispanic	26	22	48
Filipino	21	15	36
Non-Hispanic White	415	191	606
Other Ethnicities	0	2	2
Pacific Islander	6	2	8
Unknown/Decline to State	32	11	43
International Students	219	66	285
California Residents (domestic)	19	13	32
Non-California Residents (domestic)	853	422	1,275
Applications	1,123	570	1,693
Admissions	563	296	859
Entering Students	414	207	621

Fall 2002 – 2014¹ Applicants, Admits, New and Total Enrollment



¹2014 data as of October 2, 2013. Data reported for 2014 New Enrollment are based on Students' Intent to Register. Excludes students in Self-Supporting Programs and students with MD, DDS, JD, or LLM degree objectives.

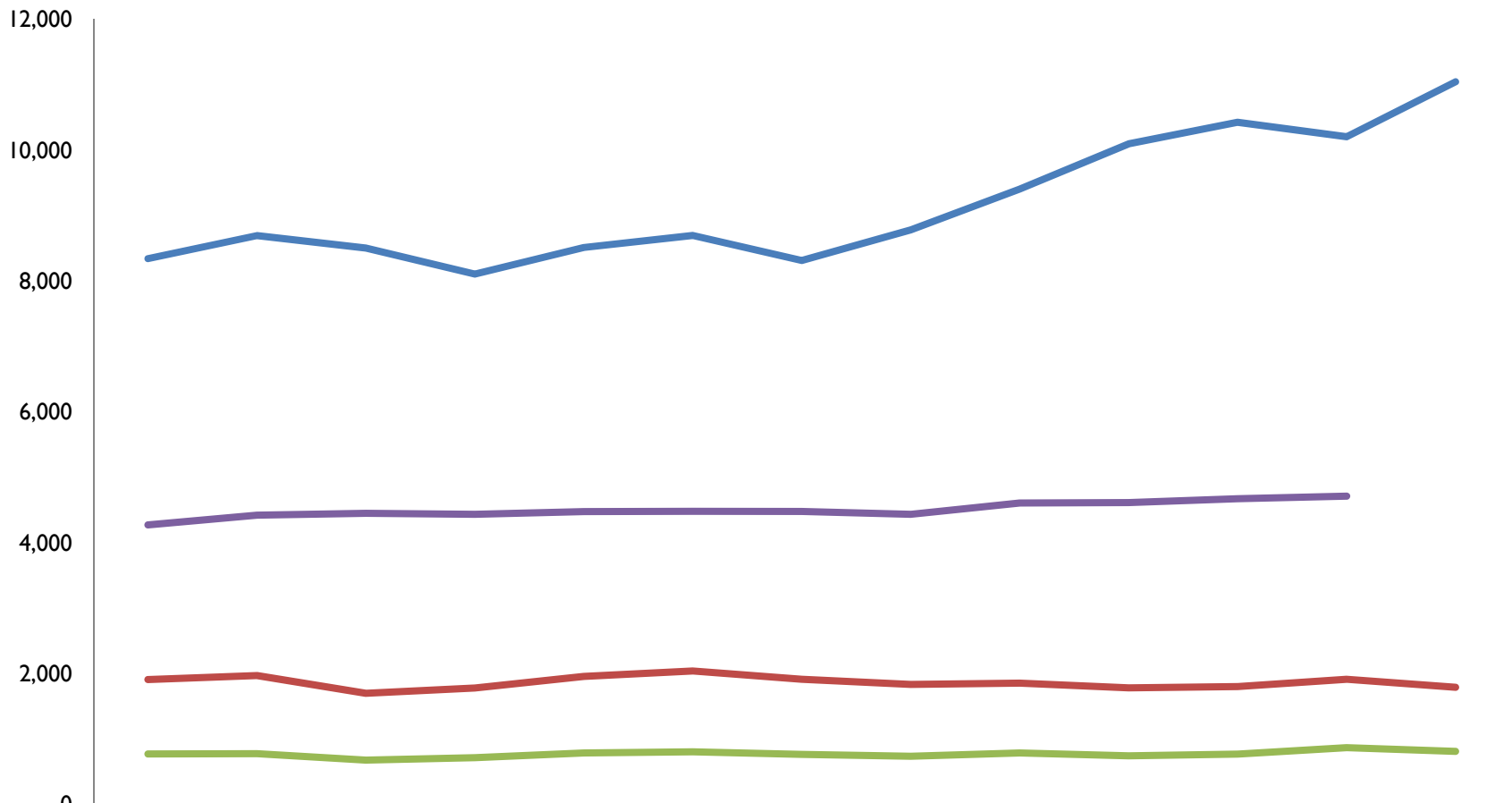
Fall 2002 – 2014¹ Master's Applicants, Admits, New and Total Enrollment



¹2014 data as of October 2, 2014. Data reported for 2014 New Enrollment are based on Students' Intent to Register. Excludes students in Self-Supporting Programs and students with MD, DDS, JD, or LLM degree objectives.

10/6/2014

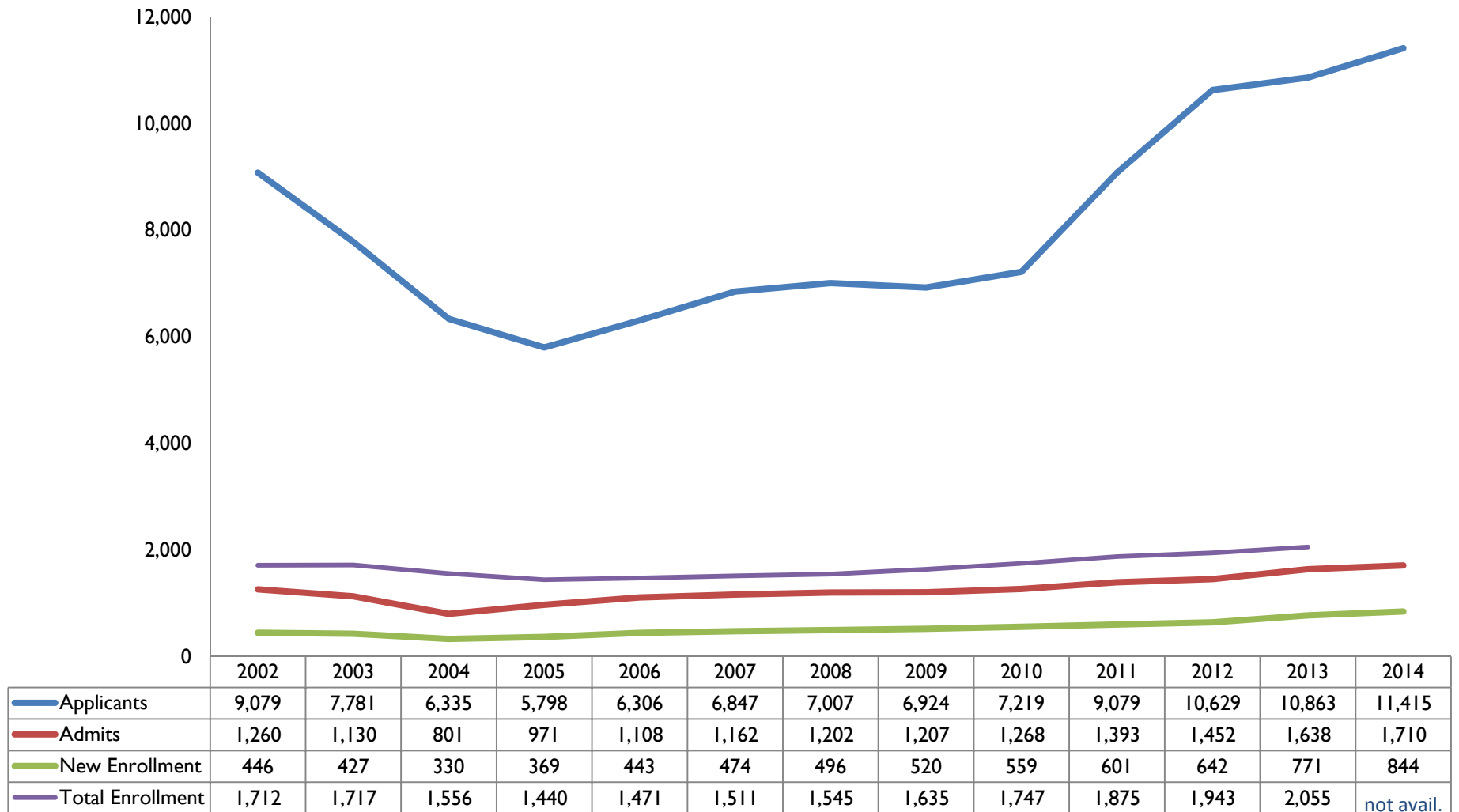
Fall 2002 – 2014¹ Doctoral Applicants, Admits, New and Total Enrollment



	2002	2003	2004	2005	2006	2007	2008	2009	2010	2011	2012	2013	2014
Applicants	8,346	8,699	8,508	8,110	8,517	8,701	8,319	8,786	9,409	10,101	10,431	10,209	11,050
Admits	1,915	1,976	1,705	1,786	1,962	2,045	1,920	1,840	1,859	1,788	1,808	1,919	1,797
New Enrollment	778	783	684	721	792	810	771	743	793	749	775	874	818
Total Enrollment	4,279	4,426	4,456	4,440	4,481	4,486	4,483	4,440	4,613	4,619	4,678	4,718	not avail.

¹2014 data as of October 2, 2014. Data reported for 2014 New Enrollment are based on Students' Intent to Register. Excludes students in Self-Supporting Programs and students with MD, DDS, JD, or LLM degree objectives.

Fall 2002 – 2014¹ International Applicants, Admits, New and Total Enrollment



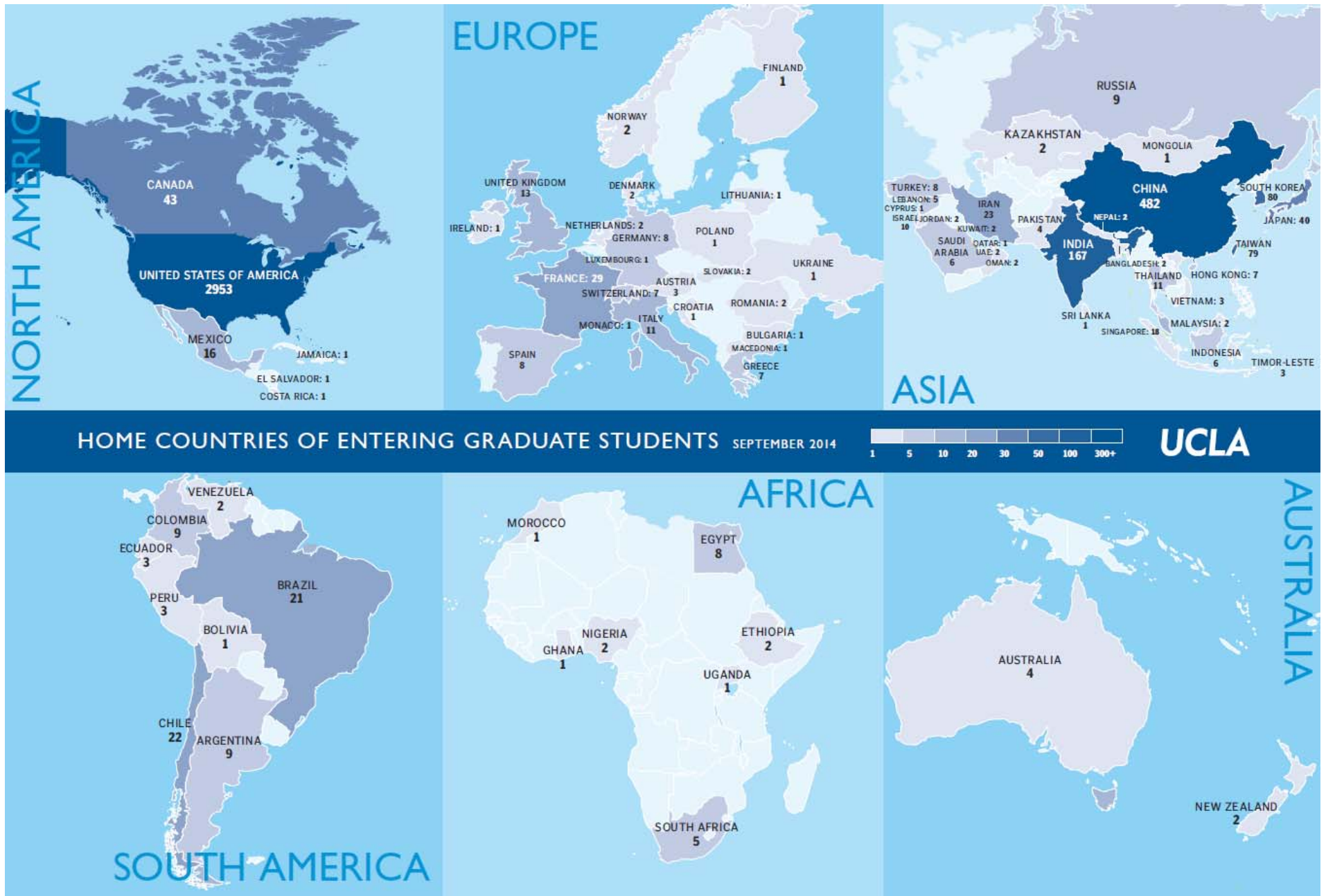
¹2014 data as of October 2, 2014. Data reported for 2014 New Enrollment are based on Students' Intent to Register. Excludes students in Self-Supporting Programs and students with MD, DDS, JD, or LLM degree objectives.

Fall 2004-13 Enrollment in State-Supported Programs¹: International Students by Region and Country

	2004	2005	2006	2007	2008	2009	2010	2011	2012	2013		
Africa												
Botswana	1	1	1	1	1	2	2	1	1	1	Africa Other: Liberia, Morocco, Tunisia, Upper Volta	
Egypt	9	14	16	15	17	15	9	9	8	9		
Ghana	1	-	-	-	1	2	2	3	3	3		
Kenya	4	3	4	4	3	3	2	2	2	1		
South Africa	3	2	4	6	5	4	4	2	1	1		
Other	9	11	8	8	8	4	4	8	7	4		
Subtotal	27	31	33	34	35	30	23	25	22	19		
Asia												
China, People's Republic	347	338	327	344	371	430	514	629	760	873	Asia Other: Bangladesh, Burma, Cambodia, Hong Kong, Indonesia, Kazakhstan, Macao, Malaysia, Mongolia, Nepal, Pakistan, Philippines, Singapore, Sri Lanka, Thailand, Uzbekistan, Vietnam	
India	123	104	127	116	126	144	204	196	144	157		
Japan	86	80	79	82	77	62	50	56	58	52		
Korea, Republic of	210	206	213	214	227	223	200	184	180	169		
Taiwan	163	157	162	161	156	161	176	172	162	160		
Other	94	93	97	102	97	96	106	117	114	102		
Subtotal	1,023	978	1,005	1,019	1,054	1,116	1,250	1,354	1,418	1,513		
Europe												
France	24	19	24	25	21	23	26	31	26	24	Europe Other: Albania, Armenia, Austria, Belgium, Bulgaria, Cyprus, Denmark, Finland, Greece, Hungary, Ireland, Netherlands, Norway, Poland, Portugal, Romania, Russia, Serbia, Slovenia, Spain, Sweden, Switzerland, Ukraine	
Germany	28	19	21	22	22	23	15	13	15	16		
Italy	28	22	16	24	19	28	22	19	27	29		
Turkey	33	24	24	30	33	36	35	33	33	33		
United Kingdom	32	25	24	19	29	25	19	20	17	20		
Other	156	127	113	94	92	79	81	94	102	96		
Subtotal	301	236	222	214	216	214	198	210	220	218		
Middle East												
Kuwait	-	-	1	1	2	4	4	4	5	4	Middle East Other: Iraq, Jordan, Oman	
Iran	31	33	29	30	30	35	31	34	31	36		
Israel	18	12	20	19	21	25	21	18	17	22		
Lebanon	2	3	4	5	6	6	6	4	4	6		
Saudi Arabia	1	1	-	1	1	1	3	7	10	15		
Other	3	3	2	1	1	1	-	-	1	4		
Subtotal	55	52	56	57	61	72	65	67	68	87		
North America												
Canada	53	53	46	51	56	72	76	82	71	71	Bahamas, Barbados, Belize, Bermuda, Costa Rica, Guatemala, Haiti, Honduras, Jamaica, Nicaragua, Panama, St. Lucia, Trinidad & Tobago, Turks & Caicos Islands	
Mexico	30	24	32	44	45	45	46	43	52	47		
Subtotal	83	77	78	95	101	117	122	125	123	118		
Central America/Caribbean	4	2	3	4	3	3	2	2	1	3		
South America												
Argentina	14	10	11	15	13	9	12	12	15	15		South America Other: Ecuador, Peru
Brazil	22	21	22	23	18	22	28	33	27	29		
Chile	18	17	17	16	14	15	17	14	19	22		
Colombia	8	9	6	10	11	8	9	9	11	10		
Venezuela	-	-	1	1	2	5	5	4	-	4		
Other	18	16	20	19	15	13	7	7	8	5		
Subtotal	80	73	77	84	73	72	78	79	80	85		
Oceania												
Australia	4	3	3	6	7	8	6	7	6	9		
New Zealand	6	4	4	6	5	3	3	5	5	3		
Other	-	1	-	1	1	-	-	1	-	-		
Subtotal	10	8	7	13	13	11	9	13	11	12		
TOTAL	1,583	1,457	1,481	1,520	1,556	1,635	1,747	1,875	1,943	2,055		

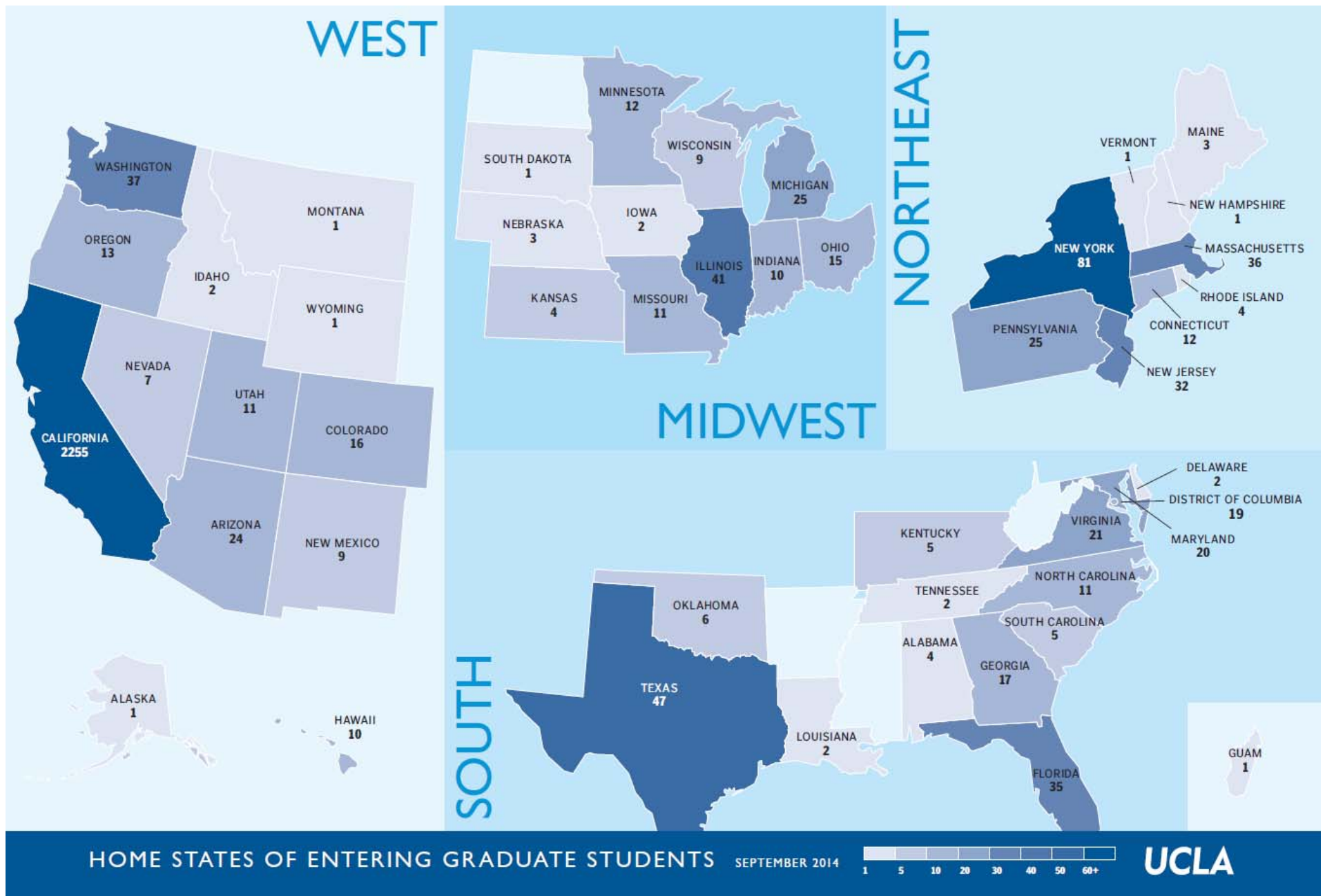
¹ Excludes students with MD, DDS, JD, or LLM degree objectives

Fall 2014 Home Countries of Entering International Graduate Students¹



¹Excludes students with MD degree objective

Fall 2014 Home States of Entering Domestic Graduate Students¹



¹Excludes students with MD degree objective

Fall 2010-14 State-Supported Programs

Underrepresented Minority Applications, Admits and Intents by Ethnicity

Fall 2014 represents a 5-year high for underrepresented minority total applications, admits, and first-time enrollment. The total number of underrepresented minority first-time enrollees grew by 6% for Fall 2014, to a 5-year high.

5-yr high 5-yr low

Underrepresented Minority Applications by Ethnicity - Counts and % of total applications

	10F		11F		12F		13F		14F ¹		13F to 14F Change in number
American Indian / Alaskan Native	131	1%	108	0%	115	0%	127	0%	126	0%	-1
Black / Afro-American	894	4%	1024	4%	1007	4%	997	4%	1049	4%	52
Filipino / Filipino-American	354	2%	330	1%	289	1%	301	1%	319	1%	18
Hispanic / Latino or Spanish Origin	1763	8%	1729	7%	1769	7%	1863	7%	2016	7%	153
Total Underrepresented Minority	3142	14%	3191	13%	3180	13%	3288	13%	3510	12%	222
Total Applications	22,707		24,022		25,417		25,638		28,382		221

Underrepresented Minority Admits by Ethnicity - Counts and % of total admits

	10F		11F		12F		13F		14F ¹		13F to 14F Change in number
American Indian / Alaskan Native	38	1%	34	1%	36	1%	38	1%	36	1%	-2
Black / Afro-American	253	4%	277	4%	269	4%	258	4%	271	4%	13
Filipino / Filipino_American	105	2%	118	2%	84	1%	112	2%	115	2%	3
Hispanic / Latino or Spanish Origin	548	9%	574	9%	552	9%	604	9%	659	9%	55
Total Underrepresented Minority	944	15%	1003	15%	941	15%	1012	15%	1081	15%	69
Total Admits	6,339		6,578		6,330		6,702		7,020		372

Underrepresented Minority Intents by Ethnicity - Counts and % of total intents

	10F		11F		12F		13F		14F ¹		13F to 14F Change in number
American Indian / Alaskan Native	15	0%	19	1%	20	1%	22	1%	19	1%	-3
Black / Afro-American	153	4%	185	5%	160	5%	155	4%	170	5%	15
Filipino / Filipino_American	61	2%	73	2%	51	1%	76	2%	76	2%	0
Hispanic / Latino or Spanish Origin	347	10%	376	11%	349	10%	396	11%	421	11%	25
Total Underrepresented Minority	576	17%	653	19%	580	17%	649	18%	686	18%	37
Total Intents	3,438		3,514		3,432		3,612		3,714		180

¹Fall 2014 counts as of October 1, 2014

2013-14¹ Postdoctoral Scholars & Visiting Graduate Researchers

	Postdoctoral Scholars	Visiting Graduate Researchers
Arts & Architecture	0	2
Basic Biomedical Sciences	51	3
Education & Information Studies	15	6
Engineering & Applied Science	142	47
Health Sciences Academic	121	7
Humanities ²	10	11
Life Sciences	98	15
Management	4	4
Nursing	9	0
Physical Sciences	164	36
Public Affairs	1	4
Public Health	16	5
Social Sciences	9	15
Theater, Film & TV	0	2
Research Centers	199	58
Law	2	4
Dentistry	23	9
Medicine	290	21
Total	1154	249

Research Centers	Postdoctoral Scholars	Visiting Graduate Researchers
Brain Research Institute	2	
Broad Stem Cell Research Center		6
California NanoSystems Institute	11	4
Center for Chinese Studies		4
Crump Institute for Molecular Imaging	8	
Ctr for Envtl Implications of Nanotechnology	4	
Dental Research Institute	5	
Institute for Genomics & Proteomics	23	
Institute for Pure & Applied Mathematics		17
Institute for Res on Labor & Employment		6
Institute for Society & Genetics	4	
Institute for Technology Advancement	2	
Institute of Geophysics & Planetary Physics	3	
Institute of the Environment	7	
Joint Inst for Reg Earth System Sci & Engr	11	
Jules Stein Eye Institute	19	3
Semel Institute	86	5
Western Institute for Nanoelectronics	5	
Other Research Centers	9	13
Total	199	58

	Men	Women	Total
Postdoctoral Scholars (Fall 2013)	674	441	1,154 ³
Visiting Graduate Researcher (Fall 2013)	144	103	249 ⁴

¹Active appointments in Fall 2013

²Postdoctoral Scholars count includes five Humanities postdocs + five Mellon Postdoctoral Program in the Humanities Fellows

³Includes 39 individuals of unknown gender

⁴Includes 2 individuals of unknown gender

International Graduate¹ Admission Offers: Percent Change Fall 2012 to Fall 2013

	NATIONAL ² % Change	STATE-SUPPORTED PROGRAMS ³		
		Fall 2012	Fall 2013	% Change
Country of Origin				
China	5%	716	853	19%
South Korea	-10%	123	115	-7%
India	27%	182	208	14%
Canada	-1%	47	64	36%
Mexico	0%	32	31	-3%
Brazil	46%	14	23	64%
Taiwan	-3%	72	114	58%
Region of Origin				
Middle East	12%	63	73	16%
Africa	7%	26	33	27%
Europe	0%	162	159	-2%
TOTAL	9%	1591	1847	16%

¹Excludes J.D., M. Div, D.D.S., M.D., D.V.M, and D.P.T.

³Source: UCLA Student Records System

²Source: 2013 CGS International Graduate Admissions Survey

Percentages may not add to 100% due to rounding

- Growth in offers to international students significantly outpaced the national average (16% vs. 9%).
- Offers to Chinese applicants increased 19%, nearly 4x the national average.
- Offers to Indian applicants increased, but at half the national pace.
- >50% increase in offers made to Brazilian and Taiwanese students
- UCLA's large increase in offers to Taiwanese students runs counter to negative national trend.

International Graduate¹ First-Time Enrollment: Percent Change Fall 2012 to Fall 2013

	NATIONAL ² % Change	STATE-SUPPORTED PROGRAMS ³		
		Fall 2012	Fall 2013	% Change
Country of Origin				
China	5%	295	352	19%
South Korea	-12%	51	55	8%
Mexico	-2%	19	14	-26%
India	40%	91	100	10%
Brazil	17%	5	14	180%
Canada	3%	22	27	23%
Taiwan	-8%	32	55	72%
Region of Origin				
Middle East	10%	24	36	50%
Europe	3%	80	86	8%
Africa	5%	8	12	50%
TOTAL	10%	717	838	17%

¹Graduate Enrollment excludes J.D., M. Div, D.D.S., M.D., D.V.M, and D.P.T.

²Source: 2013 CGS International Graduate Admissions Survey

³Source: UCLA Student Records System

Percentages may not add to 100% due to rounding

- The 17% growth in enrollment of first-time international students exceeded national average (10%).
- Increases were seen for all countries and regions except Mexico, which showed a 26% decline.
- First-time enrollment of Chinese students at UCLA grew at nearly 4x the national pace (19% vs. 5%). Taiwan also showed strong growth.
- Students from China continued to make up the majority of international first-time enrollees.

International Graduate¹ Total Enrollment: Percent Change Fall 2012 to Fall 2013

	NATIONAL ² % Change	STATE-SUPPORTED PROGRAMS ³		
		Fall 2012	Fall 2013	% Change
Country of Origin				
China	11%	763	946	24%
Mexico	6%	51	52	2%
South Korea	-6%	177	170	-4%
Taiwan	-7%	164	162	-1%
Brazil	9%	29	38	31%
Canada	-1%	79	84	6%
India	14%	248	260	5%
Region of Origin				
Europe	1%	235	247	5%
Africa	0%	36	34	-6%
Middle East	15%	70	93	33%
TOTAL	7%	2154	2349	9%

¹Graduate Enrollment excludes J.D., M. Div, D.D.S., M.D., D.V.M, and D.P.T.

²Source: 2013 CGS International Graduate Admissions Survey

³Source: UCLA Student Records System

Percentages may not add to 100% due to rounding

- Total international student enrollment increased 9%, compared with 7% nationally.
- Enrollments from China, Brazil and the Middle East showed the largest increases (% basis).
- Chinese students continued to constitute the largest international student population on campus,. The percent growth at UCLA was more than 2x the national average.